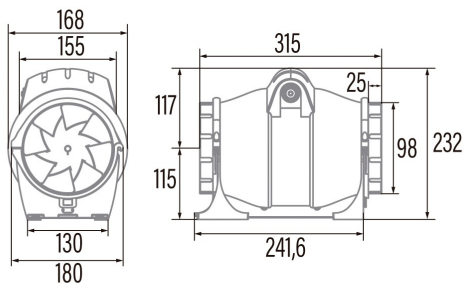




DUCT IN-LINE 100/270

Cod. 00702000

EAN 8422248021203



GENERAL INFORMATION

EAN/UPC	8422248021203
Subfamily	In Line

General features

Motor type	AC/INDUCTION
Motor power (W)	18;40
Lighting technology	N/A
Light quantity	N/A
Filter type	N/A
Number of layers	N/A
Control description	N/A
Power levels	2
Timer	-
Hygro timer	-
Electronic filter saturation indicator	-
Dimmable lighting	-

Installation

Width (mm)	315
Height (mm)	232
Depth (mm)	168
Total minimum height (mm)	2300
Outlet diameter (mm)	98
Maximum pressure (Pa)	150
Anti-return flap included	-
Easy installation system	No

Power connection

Nominal voltage (V)	230
Nominal frequency (Hz)	50
Nominal input power (W)	18;40
Electric shock protection	Class II
Plug type	No plug

Accessories

Fixed grill	1910200
Overpressure relief valve	1910300
Switching speed	1142001

Power and water connection

Nominal voltage (V)	230
Nominal frequency (Hz)	50
Nominal input power (W)	18;40
Electric shock protection	Class II
Plug type	No plug