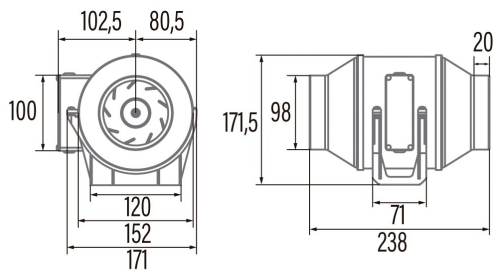




DUCT IN LINE 100/130

Cod. **00770000**

EAN **8422248920735**



GENERAL INFORMATION

EAN/UPC	8422248920735
Subfamily	In Line

General features

Motor type	AC/INDUCTION
Motor model	SP5830
Motor power (W)	28
Lighting technology	N/A
Light quantity	N/A
Filter type	N/A
Number of layers	N/A
Control description	N/A
Power levels	N/A
Timer	-
Hygro timer	-
Electronic filter saturation indicator	-
Dimmable lighting	-

Installation

Width (mm)	238
Height (mm)	171,5
Depth (mm)	171
Total minimum height (mm)	2300
Outlet diameter (mm)	98
Maximum pressure (Pa)	100
Anti-return flap included	-
Easy installation system	No

Power connection

Nominal voltage (V)	220-240
Nominal frequency (Hz)	50/60
Nominal input power (W)	28
Electric shock protection	Class II
Plug type	No plug

Accessories

Fixed grill	1910200
Overpressure relief valve	1910300

Power and water connection

Nominal voltage (V)	220-240
Nominal frequency (Hz)	50/60
Nominal input power (W)	28
Electric shock protection	Class II
Plug type	No plug